



updated 06.12.2010
application version: 00.061210

USER MANUAL ZeelProg PSR-S01

Supported control units: **PSR-S01**

ZeelProg is PC application for programming ZEELTRONIC engine *control units*.
For programming special PC-USB programmer is needed.

- **ZeelProg** automatically detects PC-USB programmer connection and enables all functions (without PC-USB programmer, **ZeelProg** application is locked).
- **ZeelProg** automatically detects type of engine *control unit* connected to PC-USB programmer.

CONTENT

<i>ZeelProg</i> SOFTWARE INSTALLATION GUIDE	3
<i>ZeelProg</i> USER INTERFACE	3
<u>Auto detection</u>	3
<u>Menu structure</u>	4
<u>Ignition Parameters</u>	5
PROGRAMMING AND SETTING NEW PARAMETERS	6
<u>Changing control unit parameters</u>	6
<u>Make new *.zee file without connecting control unit</u>	6
MONITOR FUNCTION	7

ZeelProg SOFTWARE INSTALLATION GUIDE

CD content:

- driver (USB programmer driver)
- NET Framework
- ZeelProg

Software can be also downloaded from web site:

<http://www.zeeltronic.com/page/zeelprog.php>

ZeelProg application can be installed on Windows XP/Vista.
"NET Framework 3.5" needs to be installed.

Installation:

- ① Insert CD-ROM and browse content.
- ② Install USB programmer driver with running "CDM20600.exe" from CD-ROM "driver" directory.
- ③ Install **ZeelProg** with running "setup ZeelProg.exe" from CD-ROM "ZeelProg" directory.

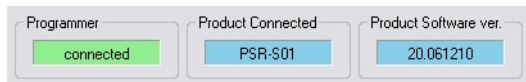
If **ZeelProg** does not start, install "NET Framework" from CD-ROM "NET Framework" directory.

ZeelProg USER INTERFACE

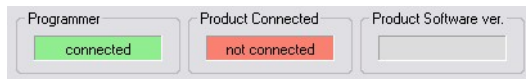
Auto detection

Zeelprog automatically detects USB-Programmer connection and type of *control unit*.

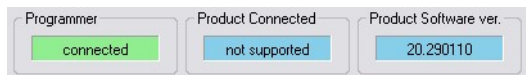
⇒ Programmer connected, product (*control unit*) connected:



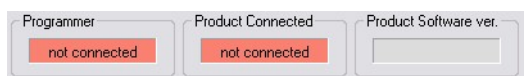
⇒ Programmer connected, product (*control unit*) not connected:



⇒ Programmer connected, product (*control unit*) not supported:



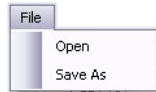
⇒ Programmer not connected, product (*control unit*) not connected:



Menu structure



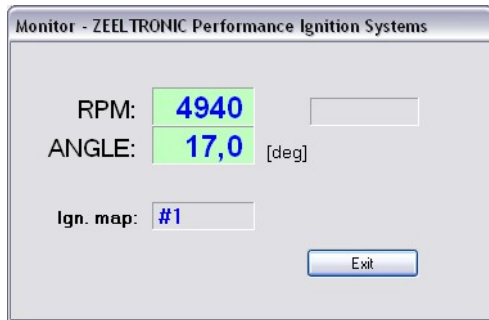
⇒ **File menu** is active when PC-USB programmer is connected



Open → Open an existing *.zee file

Save As → Save all parameters to *.zee file

⇒ **Monitor** is active when *control unit* is connected to PC-USB programmer. Clicking on the **Monitor** opens Monitor window.



⇒ Clicking on **About** opens About window and show some basic information about **ZeelProg** application.



Ignition Parameters

Ignition Parameters

Ignition Map #1

10 **Nr. of Points** **deg**

Point 1	Point 2	Point 3	Point 4	Point 5	Point 6	Point 7	Point 8	Point 9	Point 10	
1500	3000	5000	6000	7000	8000	9000	10000	11000	12000	RPM
17,0	17,0	17,0	17,0	17,0	17,0	17,0	17,0	17,0	17,0	deg

Ignition Map #2

10 **Nr. of Points** **deg**

Point 1	Point 2	Point 3	Point 4	Point 5	Point 6	Point 7	Point 8	Point 9	Point 10	
1500	3000	5000	6000	7000	8000	9000	10000	11000	12000	RPM
15,0	15,0	15,0	15,0	15,0	15,0	15,0	15,0	15,0	15,0	deg

1 **Select Ignition Map**

13000 **Rev Limit [rpm]**

34,0 **Static Angle [°]**

0,0 **Advance [°]**

30 **Delay Compensation [us]**

1 **Pulses per Rev**

- ⇒ **Nr. of Points** for each ignition map can be set from 4 to 10.
- ⇒ **RPM** of each ignition point can be set from 100rpm to 20000rpm in 100rpm steps.
- ⇒ **deg**...advance of each ignition point can be set from 0deg to 85deg in 0,1deg steps
- ⇒ **+ - deg**...increasing, or decreasing advance of all ignition points in same ignition map
- ⇒ **Static Angle** is pickup advance position from TDC (Top Dead Centre)
- ⇒ **Advance**...advances, or retards whole ignition map from -10deg to 10deg in 0,1deg steps. Positive value advances and negative value retards.
- ⇒ **Delay Compensation**...ensure correct ignition angle through whole revs. Default value is 30us.
- ⇒ **Pulses per Rev**...set to 1 for single cylinder and set to 2 for wasted spark twin cylinder.
- ⇒ **Rev limit**...limits maximum revolutions. Set to maximum 20000rpm in 100rpm steps.
- ⇒ **Select Ignition Map**...selection is active only when **Ignition Map Switch** is not enabled.

PROGRAMMING AND SETTING NEW PARAMETERS

- ➔ While programming or reading, *control unit* does not need to be connected to power supply, because it is supplied through PC-USB programmer.

Changing control unit parameters

- ① Read parameters from connected *control unit*, by pressing **Read** button.



Progress bar indicate read and verify process.

Successful reading is indicated as: 


Error while reading is indicated as: 


If error occurs, then repeat reading.

- ② Change parameters
- ③ Program parameters to connected *control unit*, by pressing **Program** button.



Progress bar indicate program and verify process.

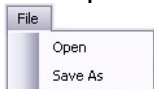
Successful programming is indicated as: 

Error while programming is indicated as: 

If error occurs, then repeat programming.

Make new *.zee file without connecting control unit

- ① Connect PC-USB programmer to PC.
- ② Set parameters
- ③ Save parameters by clicking **Save As** from **File menu**.



MONITOR FUNCTION

⇒ **Monitor** function is active when *control unit* is connected to PC-USB programmer.



Clicking on **Monitor** opens Monitor window.



⇒ Monitor show engine revolution, ignition advance angle, selected ignition map, rev limit activation.